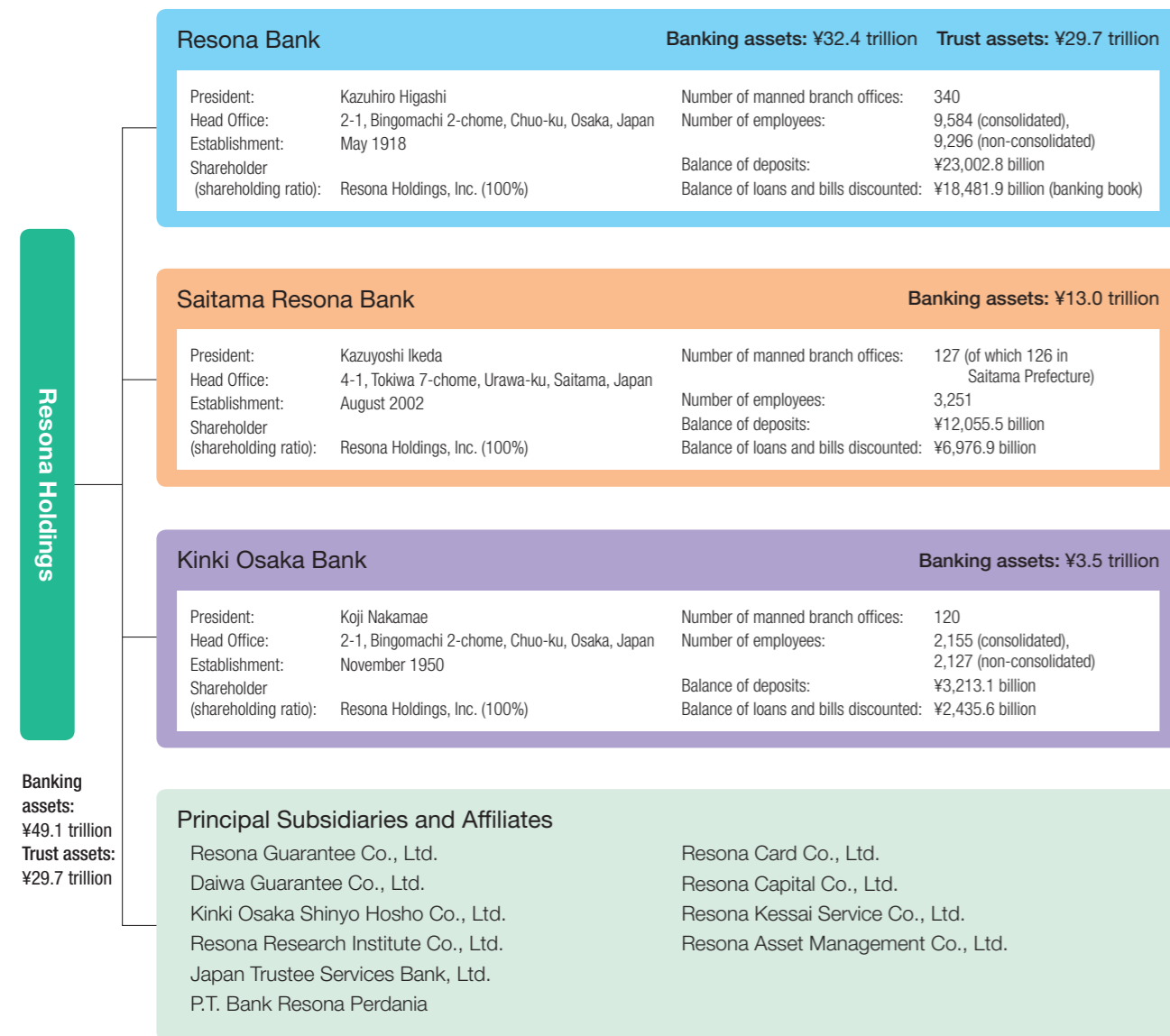


# Corporate Data

## Outline of Resona Group

As of March 31, 2016



## Credit Ratings

As of March 31, 2016

	Moody's		S&P		R&I		JCR
	Long-term	Short-term	Long-term	Short-term	Long-term	Short-term	Long-term
Resona Holdings	—	—	—	—	A	—	—
Resona Bank	A2	P-1	A	A-1	A+	a-1	A+
Saitama Resona Bank	A2	P-1	—	—	A+	a-1	A+
The Kinki Osaka Bank	A2	P-1	—	—	—	—	—

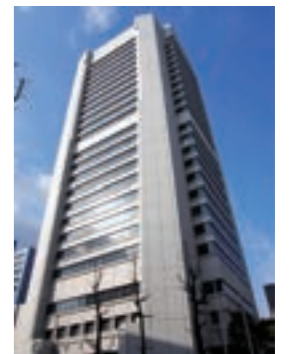
## Corporate Profile

As of March 31, 2016

Company Name: Resona Holdings, Inc.  
 President: Kazuhiro Higashi  
 Head Office: (Tokyo Head Office) 5-65, Kiba 1-chome, Koto-ku, Tokyo 135-8582, Japan  
 (Osaka Head Office) 2-1, Bingomachi 2-chome, Chuo-ku, Osaka 540-8608, Japan  
 Establishment: December 2001  
 Number of Employees: 16,674 (Consolidated), 936 (Non-consolidated)  
 Lines of Business: Group management and business strategies, etc., allocation of management resources within the Group, and supervision of subsidiaries' operations and other ancillary businesses  
 URL: <http://www.resona-gr.co.jp>



Tokyo Head Office



Osaka Head Office

## Stock Information

As of March 31, 2016

Issued Stock: 2,331,118,091 (Common stock: 2,324,118,091, Preferred stock: 7,000,000)  
 Number of Shareholders (Common stock): 274,031  
 Major Shareholders (Top ten): Common Stock

Name of shareholders	Number of shares held (Thousands)	Percentage of total shares issued (%)
The Dai-ichi Mutual Life Insurance Company	125,241	5.38
Japan Trustee Services Bank, Ltd. (Trust Account)	81,281	3.49
The Master Trust Bank of Japan (Trust Account)	72,726	3.12
Nippon Life Insurance Company	65,488	2.81
JP MORGAN CHASE BANK 380055	57,313	2.46
Japan Trustee Services Bank, Ltd. (Trust Account 9)	55,404	2.38
STATE STREET BANK AND TRUST COMPANY 505225	39,949	1.71
AMUNDI GROUP	39,883	1.71
CGMI PB CUSTOMER ACCOUNT	36,550	1.57
Japan Trustee Services Bank, Ltd. (Trust Account 4)	36,483	1.56

## Composition of Stockholders (Common Stock)

