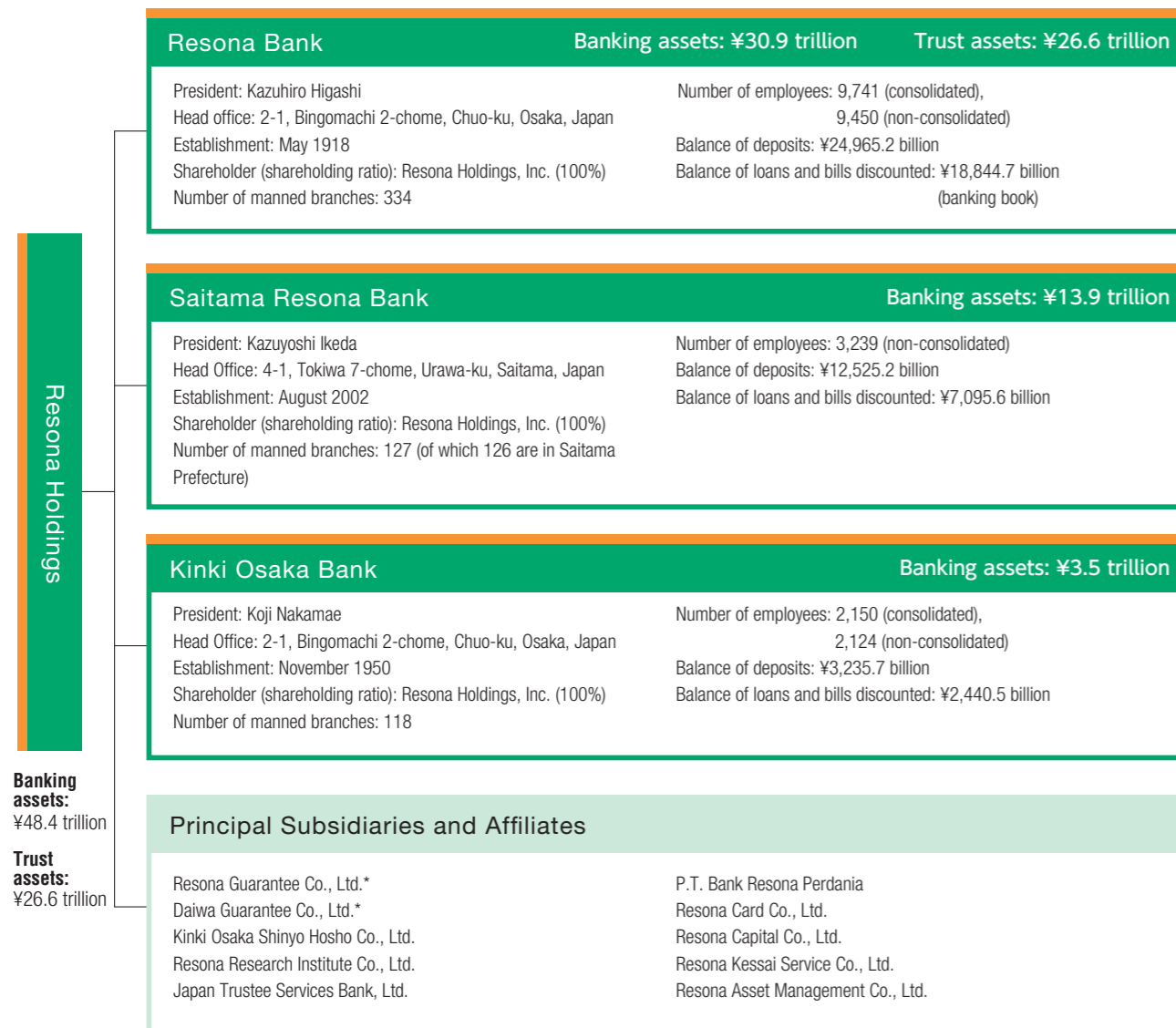


OUTLINE OF THE RESONA GROUP (As of March 31, 2017)



*Merged on April 1, 2017 with Resona Guarantee Co., Ltd. as the surviving company

CREDIT RATINGS (As of March 31, 2017)

	Moody's		S&P		R&I		JCR
	Long-term	Short-term	Long-term	Short-term	Long-term	Short-term	Long-term
Resona Holdings	—	—	—	—	A	—	—
Resona Bank	A2	P-1	A	A-1	A+	a-1	A+
Saitama Resona Bank	A2	P-1	—	—	A+	a-1	A+
Kinki Osaka Bank	A2	P-1	—	—	—	—	—

CORPORATE PROFILE (As of March 31, 2017)

Company Name: Resona Holdings, Inc.
 President: Kazuhiro Higashi
 Head Office: (Tokyo Head Office) 5-65, Kiba 1-chome, Koto-ku, Tokyo 135-8582, Japan
 (Osaka Head Office) 2-1, Bingomachi 2-chome, Chuo-ku, Osaka 540-8608, Japan
 Establishment: December 2001
 Number of Employees: 16,860 (Consolidated) 997 (Non-consolidated)
 Lines of Business: Formulation of Group management and business strategies, allocation of management resources within the Group, and supervision of subsidiaries' operations and other ancillary businesses
 URL: <http://www.resona-gr.co.jp/holdings/english/index.html>



Tokyo Head Office



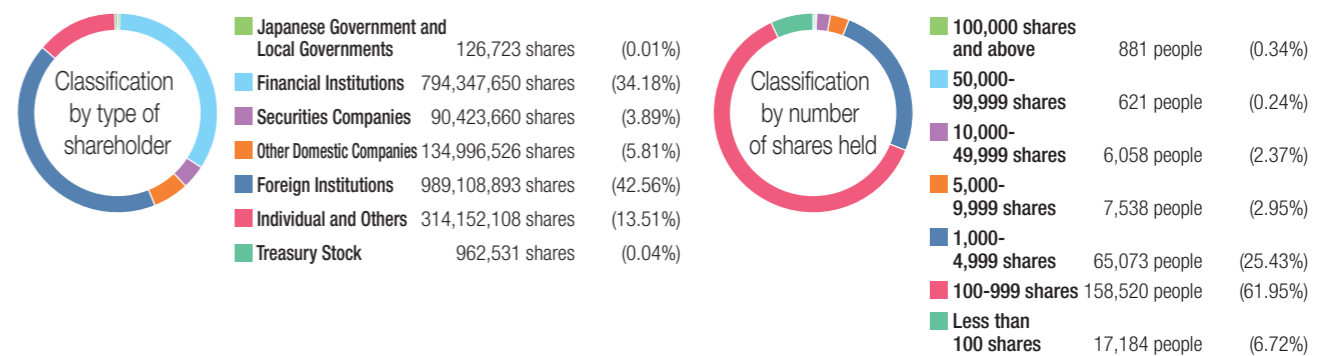
Osaka Head Office

STOCK INFORMATION (As of March 31, 2017)

Issued Stock: 2,328,118,091 (Common stock: 2,324,118,091, Preferred stock: 4,000,000)
 Number of Shareholders (Common stock): 255,875
 Major Shareholders (Top ten): Common Stock

Name of shareholder	Number of shares held (Thousands)	Percentage of total shares issued (%)
The Dai-ichi Life Insurance Company, Limited	125,241	5.38
The Master Trust Bank of Japan (Trust Account)	102,343	4.40
Japan Trustee Services Bank, Ltd. (Trust Account)	97,170	4.18
Japan Trustee Services Bank, Ltd. (Trust Account 9)	68,312	2.93
Nippon Life Insurance Company	65,488	2.81
AMUNDI GROUP	45,133	1.94
Japan Trustee Services Bank, Ltd. (Trust Account 5)	42,418	1.82
STATE STREET BANK AND TRUST COMPANY 505225	34,068	1.46
STATE STREET BANK WEST CLIENT – TREATY 505234	33,892	1.45
GOLDMAN, SACHS & CO. REG	32,804	1.41

Composition of Stockholders (Common Stock)





Resona Holdings, Inc.

(Tokyo Head Office) 5-65, Kiba 1-chome, Koto-ku, Tokyo 135-8582, Japan
TEL: 81-3-6704-3111 (Representative)

(Osaka Head Office) 2-1, Bingomachi 2-chome, Chuo-ku, Osaka 540-8608, Japan
TEL: 81-6-6268-7400 (Representative)

URL: <http://www.resona-gr.co.jp/>

Issued in August 2017

